

WILLIAM CRAMP ELEMENTARY SCHOOL CHARTERETTE RESULTS

Main Concerns at William Cramp Elementary

- 1) Safety
- 2) No Soft Ground Plane
- 3) Lighting

Dreams for William Cramp Elementary

- 1) More Parking
- 2) Interactive Play Elements
- 3) Track

What is Sacred at William Cramp Elementary?

- 1) Gardens
- 2) Handball, Handball Play Space
- 3) Play Area Walled Off and Separated

CRAMP ELEMENTARY SCHOOL: SITE AXONOMETRIC



CRAMP ELEMENTARY SCHOOL: Creative Play

Exposing children to recreational and play activities that sparks imagination is the key to the development of their young minds. By incorporating play equipment, such as the Pollinator Play Zone, Butterfly Garden, and Music Sense Area, Cramp Elementary School children will have the opportunity to create, pretend, and enjoy childhood, even though they are at school! In addition, outdoor classrooms to break the sterile atmosphere of indoor classrooms. In addition, the Generation Wall, a surrounding border to the play area, will hold a piece of each graduating classes' memory, through art, on display.



OUTDOOR CLASSROOM



BUTTERFLY GARDEN



GENERATION WALL



OVERSIZED POLLINATOR GARDEN



METAL FLOWERS



SENSORY MUSIC ZONE

CRAMP ELEMENTARY SCHOOL: Philadelphia Green 2015

COMMON NAME

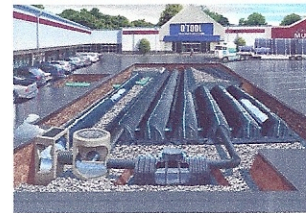
- Silky dogwood
- Grey dogwood
- Red-osier dogwood
- Common elderberry
- Red-berried elder
- Common ninebark
- Bladdernut
- Blackhaw viburnum
- Spicebush
- Smooth alder
- Wild hydrangea
- Wild black currant
- Arrowwood
- Silky willow
- Ginkgo
- Japanese Maple
- Catalpa
- Silver Maple

BOTANICAL NAME

- Cornus amomum Mill.
- Cornus racemosa
- Cornus stolonifera
- Sambucus canadensis
- Sambucus pubens (Michx.)
- Physocarpus Opulifolia
- Staphylea bumalda
- Viburnum prunifolium
- Lindera benzoin
- Alnus incana ssp. rugosa
- Hydrangea arborescens
- Ribes nigrum
- Viburnum dentatum
- Salix nigra
- Ginkgo biloba
- Acer pseudoplatanus
- Catalpa bignonioides
- Acer saccharinum

Creating a naturalistic landscape that doubles as a key component in controlling the run-off produced by the site will play a key role in the progression of Philadelphia Green 2015, an initiative proposed by current Mayor Michael Nutter.

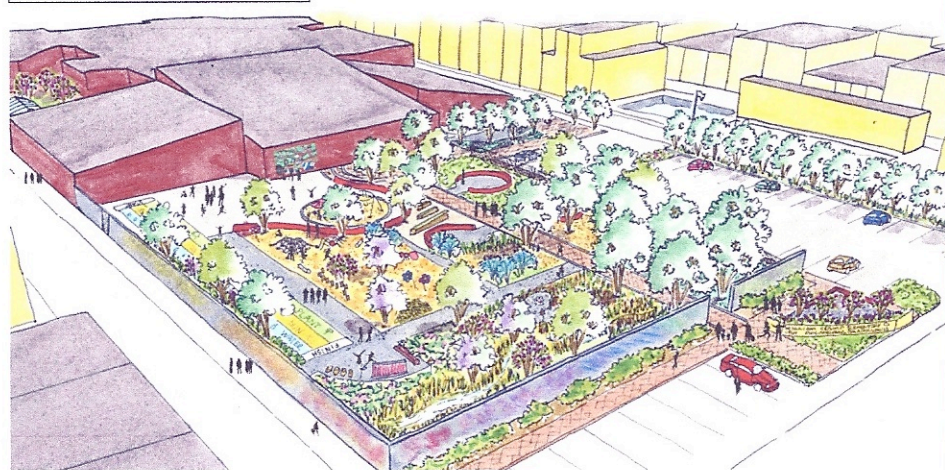
CULTEC Stormwater Management System



Proposed to be constructed under the existing parking lot on the site, a CULTEC system would greatly reduce the amount of storm run-off William Cramp Elementary currently contributes to the city of Philadelphia. The system works through a series of underground chambers that collect the water through drainage pipes and tanks. Once the water is collected into the system, it is cleaned, bio-treated, and slowly released back into to groundwater environment, significantly reducing the amount of pollution and groundwater contamination.

(http://www.cultec.com/stormwater_system.html)

CRAMP ELEMENTARY SCHOOL: Site Axonometric



National Wildlife Foundation:

Becoming Certified in the Environment!

In addition to becoming an area where children and community members alike can come together and enjoy the new playground and all its amenities, there is the potential for an added bonus! With the proper planning, William Cramp Elementary could become the first school in the city of Philadelphia to become certified as a National Wildlife Foundation school of environmental excellence!

The requirements for such an award require five major elements:

- 1) Food Availability
- 2) Water Availability
- 3) Cover/Shelter
- 4) Place to Raise Young
- 5) Sustainable Gardening

Through birdhouses, native plantings of thick, meadow grasses and woody plants, water features, rock piles, fruiting vegetation, and much more, this design will easily allow William Cramp the possibility of certification

Benefits:

- 1) Certificate of Recognition
- 2) Free NWF membership, subscription
- 3) School listed in national registry
- 4) Possible monetary benefits

www.nwf.org

